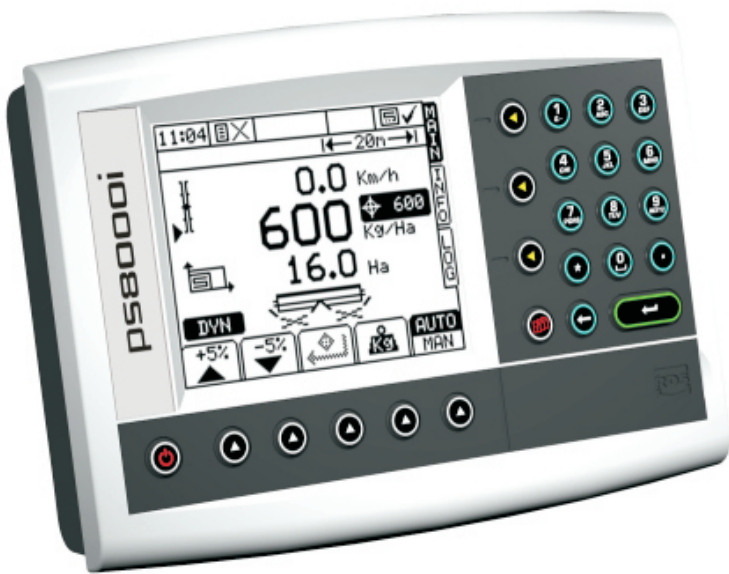


PSi

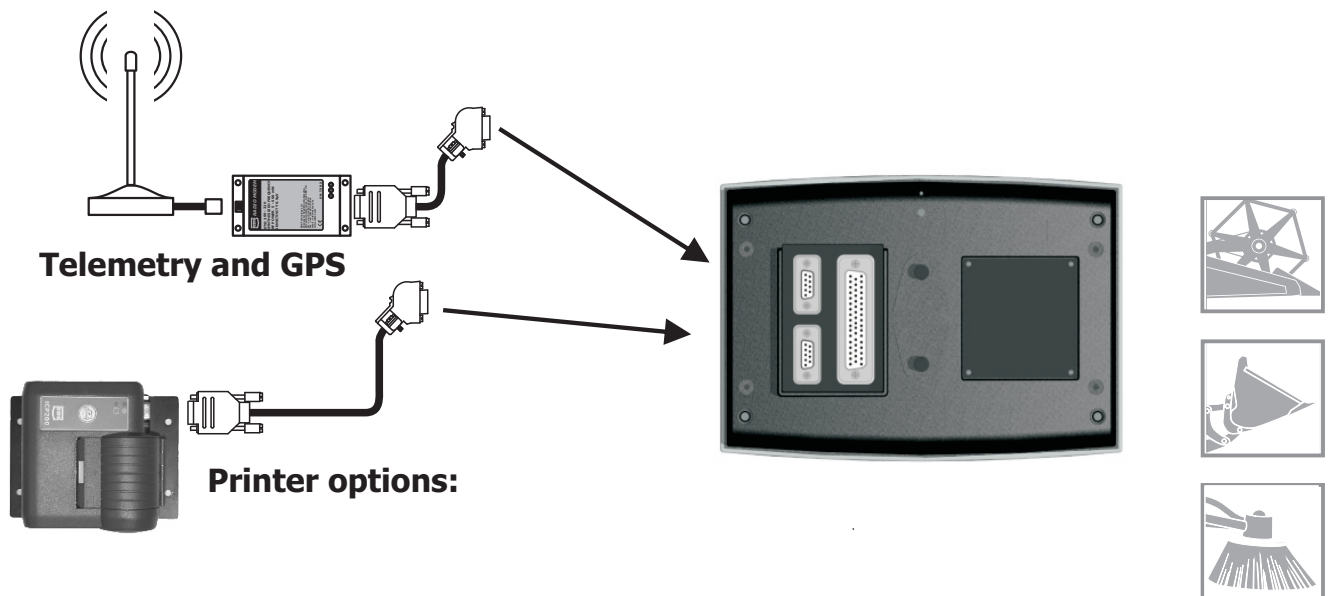
Monitor and Control



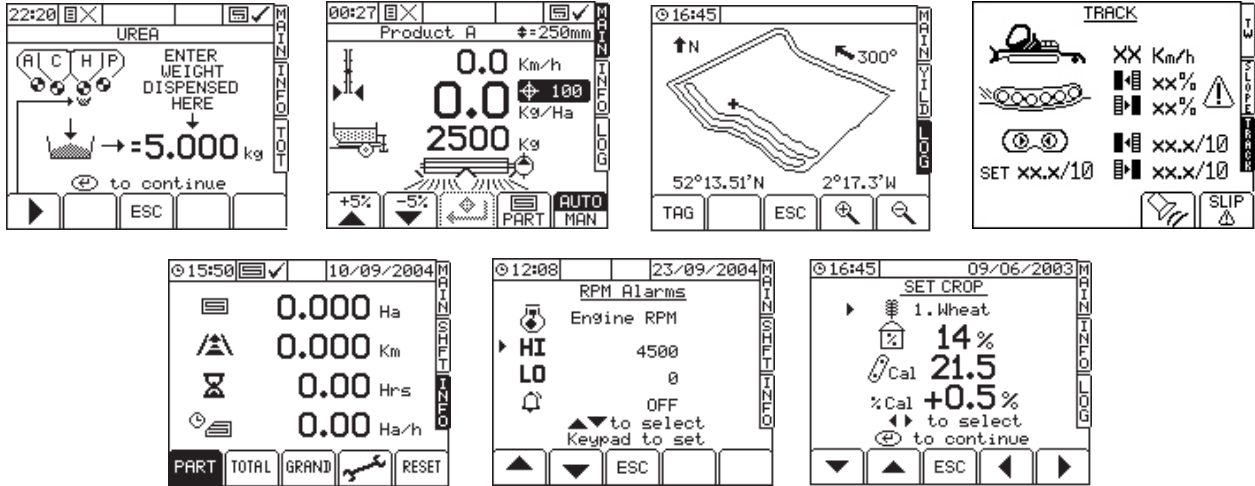
Instrument dimensions:
W:220mm x H:156mm x D:52mm
Panel mounting aperture:
215mm x 149mm

An evolution from the Pro-Series, the new PSi from RDS. A powerful menu driven instrument with graphical display and integral SD card reader for advanced monitoring and control functions.

System overview with data connections:



PSi screen samples:



Specification:

Power supply: 10 - 30V dc	Outputs: 4 transistor (500mA)
Current consumption: 500mA + outputs	3 x 2 H bridge (2.5A)
Display: 160 x 128 pixel dot matrix	3 analogue (0-Vss @ 50mA max)
LCD Variable contrast and adjustable illumination.	Communications: 2 RS232, CAN, LBS (optional)
24 elastomeric	Protection: Reverse polarity protected
Front panel switches: Hitachi H8/300H	Enclosure: ABS moulding, aluminium
Processor: Program storage: 512k x	Internal chassis.
Memory: 8 Flash ram	Mounting: Free standing or panel mount
Data storage: 128k 8	EMC: EEC 89/336 ISO 14982
SRAM	Temperature 0 - 50°C operating
On-board SD/MMC port	-30 to 70°C storage
Memory card port	Vibration: 5G @ 10 to 500Hz
Inputs: 6 digital (lo going)	Shock: 100G
10 digital (hi or lo going)	Sealing: IP54
4 analogue	

PSi available 3rd quarter 2007

**For further information, please contact the OEM department
on the details below or e-mail: rds.sales@rdstec.com**