

# G-Wiz

## Monitor and Control

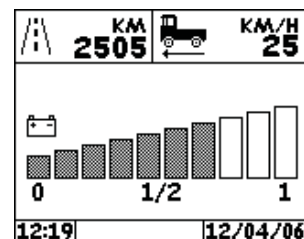
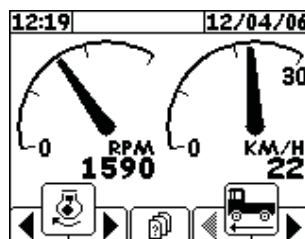
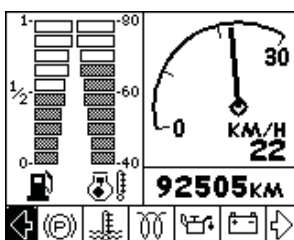


**A flexible instrument for controlling operations and the display of configurable data.**

**Available panel or bracket mounted.**

**Instrument Dimensions:**  
 W:128 mm x H:128 mm x D:60 mm  
**Panel mounting aperture:**  
 116mm x 110mm

### Sample Screens:





G-Wiz shown including rear case and stalk mounted with just central navigation key.

Front panel can be customised to show specific company livery.



## Specification:

Power supply: 10 - 30Vdc  
Current consumption: 500 mA + Output  
Display: 160 x 128 pixel dot matrix  
Variable contrast and adjustable illumination.  
Front panel switches: 5 elastomeric (1 x 4-way)  
Processor: Atmel AT91 SAM7 A3 (ARM based)  
Memory: 256K Flash  
Program storage: 256K Flash  
Data storage 32kRAM  
Inputs: 6 digital (lo going)  
6 analogue (0 - 7.5V)  
Outputs: 6 Transistor (500mA)

Communications: 2 x RS232, 2 x CAN (or 1 x RS232 + 1 x RS485)  
Protection: Reverse polarity protected  
Enclosure: ABS moulding, aluminium internal chassis  
Mounting: Free standing or panel mount  
EMC: EEC 89/336 ISO 14982  
Temperature: 0 - 50°C, operating  
-30 to 70°C storage  
Vibration: 5G @ 10 to 500Hz  
Shock: 100G  
Sealing: IP54

**For further information, please contact the OEM department on the details below or e-mail: [rds.sales@rdstec.com](mailto:rds.sales@rdstec.com)**